

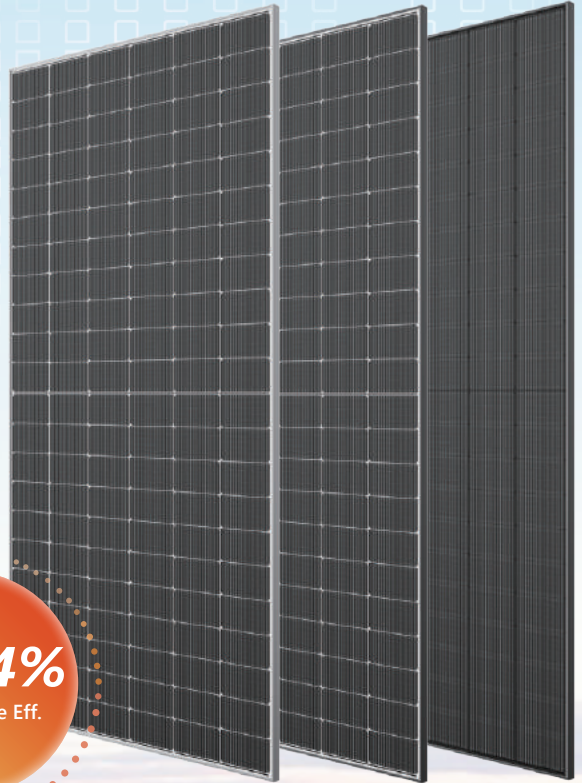
UNI T

UE625T-66HBD

600-625W

**N-type TOPCon Bifacial Half Cell
Double-glass Solar Module**

23.14%
Max Module Eff.



N-type 182*210mm Cell

Adopting the 182*210mm N-type TOPCon battery cells with highest efficiency.



Bifacial with Dual Glass

Module adopts 182*210mm half cells, bifacial module provide an additional 5%~25% output.



Harsh Environmental Adaptability

Strict salt spray and ammonia corrosion test by TUV Nord.



Low Light Features

Higher performance under low light environment.



PID Protection

Ensure the attenuation probability caused by PID phenomenon is minimized.



Load Capacity

Mechanical load tests including wind load 2400Pa and snow load 5400Pa done by TUV Nord.



Quality Management System and Product Certification

IEC 61215, IEC 61730, UL 61730

ISO9001: 2015: ISO Quality Management System.

ISO14001: 2015:ISO Environmental Management System.

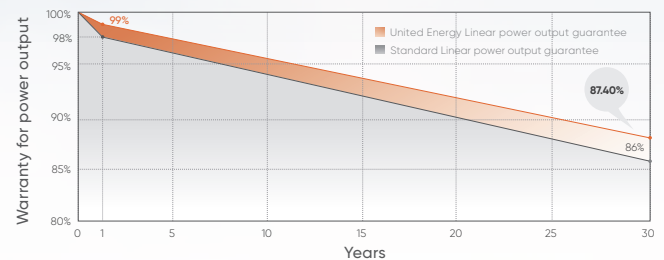
ISO45001: 2018: Occupation Health and Safety.

IEC62941:Guideline for module design qualification and type approval.

Quality Guarantee

15 year Materials Warranty

30 year Power Warranty



Electrical Parameters(STC*)

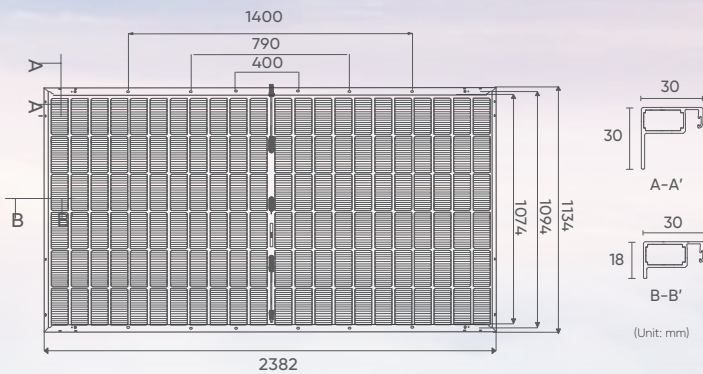
Module Type	600	605	610	615	620	625
Maximum power (Pmax/W)	600	605	610	615	620	625
Module Efficiency (%)	22.21	22.40	22.58	22.77	22.95	23.14
Optimum Operating Voltage (Vmp/V)	40.26	40.46	40.66	40.86	41.06	41.26
Optimum Operating Current (Imp/A)	14.90	14.95	15.00	15.05	15.10	15.15
Open Circuit Voltage (Voc/V)	48.45	48.75	49.05	49.35	49.55	49.75
Short Circuit Current (Isc/A)	15.78	15.81	15.84	15.88	15.93	16.00

Bifacial Output Rear side Power Gain

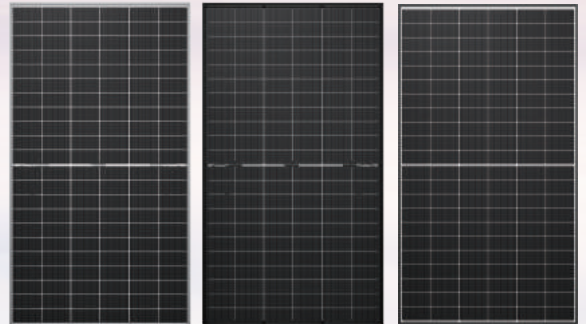
	660	666	671	677	682	688
Maximum power (Pmax/W)	660	666	671	677	682	688
Optimum Operating Voltage (Vmp/V)	40.26	40.46	40.66	40.86	41.06	41.26
Optimum Operating Current (Imp/A)	16.39	16.46	16.50	16.57	16.61	16.67
Open Circuit Voltage (Voc/V)	48.45	48.75	49.05	49.35	49.55	49.75
Short Circuit Current (Isc/A)	17.34	17.38	17.43	17.47	17.52	17.57

- Standard Test Conditions [STC]: irradiance 1000W/m²; AM 1.5; ambient temperature 25°C according to EN 60904-3;
- Tolerance of Pm: 0~+5W, Measuring uncertainty of power: ±3%. Performance deviation of Voc [V], Isc [A], Vm [V] and Im [A]: ±3%.

Design(mm)



Product Image



Design(mm)

Solar Cells	TOPCon 182*210mm
No. of Cells	132 (6×22)
Dimensions	2382 × 1134 × 30mm
Weight	33.5kg
Glass	(F) 2.0mm anti-reflective solar glass (B) 2.0mm solar glass
Frame	Anodized aluminium alloy
Junction Box	Ip68
Output Cables	4mm ² , 300mm in length, length can be customized / UV resistant
Connectors	MC4 original /MC4 compatible
Mechanical load test	5400Pa
Packaging	36pcs/box, 720pcs/40'HQ

Operating Characteristics

Operating Module Temperature	-40°C to +85°C
Maximun System Voltage	1500V DC (IEC)
Maximun Series Fuse Rating	25A
Power Tolerance	0/+5W

Temperature Characteristics

Nominal Operating Temperature (NMOT)	44±2°C
Temperature Coefficient of Pmax	-0.30%/°C
Temperature Coefficient of Voc	-0.25%/°C
Temperature Coefficient of Isc	+0.046%/°C